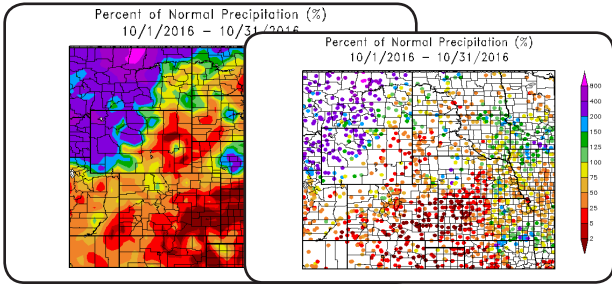


## Where can I get climate and drought monitoring information?

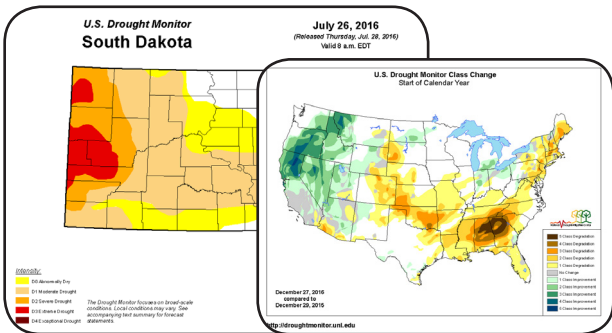
### High Plains Regional Climate Center (HPRCC)



The HPRCC is your regional source for climate data and information. Access thousands of temperature and precipitation maps, an archive of climate summaries, or download data to analyze. HPRCC staff are here to answer any of your climate-related questions.

Maps: <http://hprcc.unl.edu/maps.php?map=ACISClimateMaps>  
 HPRCC website: <http://hprcc.unl.edu/>

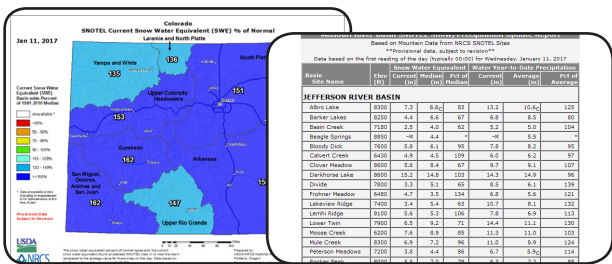
### National Drought Mitigation Center (NDMC)



The NDMC is **the** place for your drought monitoring needs. On their website, you can access the entire archive of the U.S. Drought Monitor, look at drought change maps, analyze data with the Drought Risk Atlas, or report your local impacts to the Drought Impact Reporter. Additional monitoring tools and drought planning information are also available.

U.S. Drought Monitor: <http://droughtmonitor.unl.edu/>  
 NDMC website: <http://drought.unl.edu/>

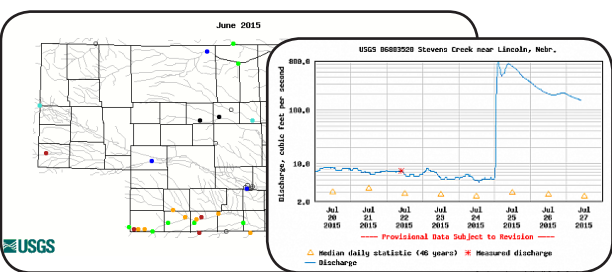
### USDA Natural Resources Conservation Service (NRCS)



The NRCS provides several resources for state-level and region-wide snowpack monitoring. Point and basin-filled maps are available for all states in the western U.S. Users can choose from snow water equivalent, snow depth, or snow density. Data are provided by the SNOTEL network.

Maps: <http://www.wcc.nrcs.usda.gov/gis/snow.html>  
 SNOTEL Data: <https://www.wcc.nrcs.usda.gov/snow/>

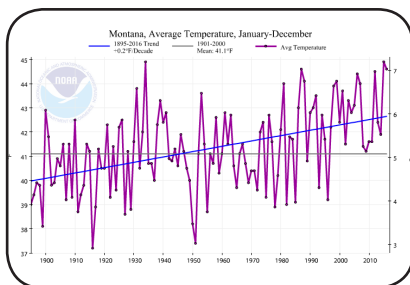
### U.S. Geological Survey (USGS)



Get an overview of streamflow conditions across the state at the USGS WaterWatch page. Current, 7-day, 14-day, 28-day, and monthly average streamflow maps are available. Click on individual stations and get summary data, hydrographs, and even a forecast. Drought, flood, and runoff maps are also available.

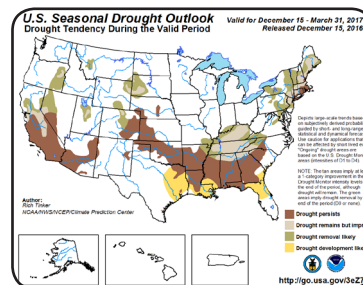
WaterWatch: <http://waterwatch.usgs.gov/index.php>

### Statewide Historic Trends



<https://www.ncdc.noaa.gov/cag/>

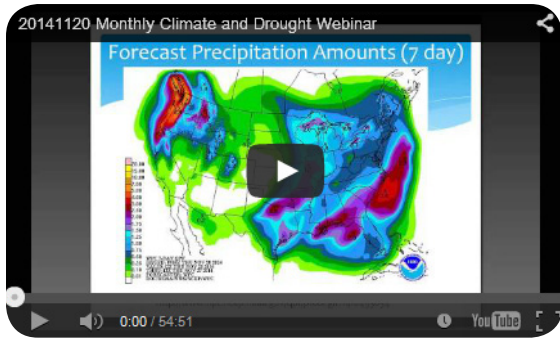
### Climate Prediction Center Outlooks



<http://www.cpc.ncep.noaa.gov/>

# How do I keep up with the latest conditions?

## Midwest and Great Plains Monthly Climate and Drought Webinars

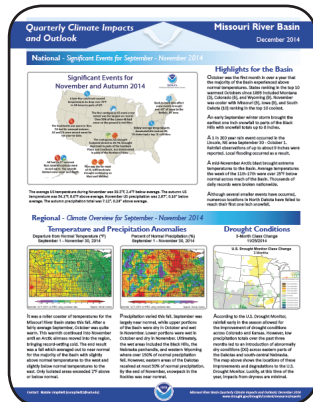


A good way to stay up to date on the latest climate and drought conditions is to join monthly webinars for the U.S. Central Region. These are held the 3rd Thursday of each month at 1pm Central. An overview of current trends and outlooks for the upcoming months is presented. At the end, there is an opportunity to ask questions.

Sign up here: <http://www.drought.gov/drought/content/regional-programs/regional-drought-webinars>

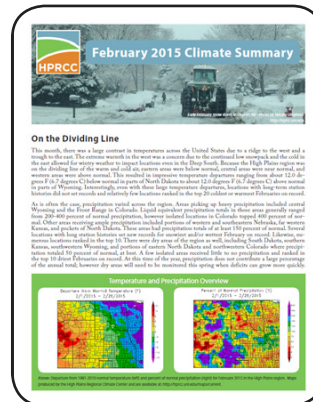
For an archive: <http://hprcc.unl.edu/webinars.php>

## Quarterly and Monthly Climate Summaries



The Missouri River Basin Climate Impacts and Outlook report is published quarterly and provides an overview of climate events and impacts that occurred over the previous season, as well as outlook information.

**This report is only 2 pages!**



This monthly summary provides an overview of temperature, precipitation, and drought conditions, as well as outlooks. Data tables for selected stations and monthly records are also included.

**This report comes out during the first week of the month.**

Quarterly Summary: <http://www.drought.gov/drought/content/resources/reports>

Monthly Summary: <http://hprcc.unl.edu/climatesummaries.php>

## Where can I get local data?

### Applied Climate Information System (ACIS)

General user: <http://climod.unl.edu/>

Advanced user: [http://www.rcc-acis.org/docs\\_webservices.html](http://www.rcc-acis.org/docs_webservices.html)

### CoCoRaHS

<http://www.cocorahs.org/>

### Drought Risk Atlas

<http://droughtatlas.unl.edu/>

## Who can I contact if I need help?

### High Plains Regional Climate Center

Phone number: (402) 472-6706 - Website: <http://hprcc.unl.edu/>

### National Drought Mitigation Center

Phone number: (402) 472-6707 - Website: <http://drought.unl.edu/>

### Local State Climate Office

Find your local state climatologist here: [https://www.stateclimate.org/state\\_programs](https://www.stateclimate.org/state_programs)